

Australian Securities and Investments Commission

Chair: Joseph Longo **Deputy Chair:** Sarah Court **Commissioners:** Simone Constant, Alan Kirkland, Kate O'Rourke

Office of the Commission
Chief of Staff: Louise Macaulay

Chair and Accountable Authority
Joseph Longo

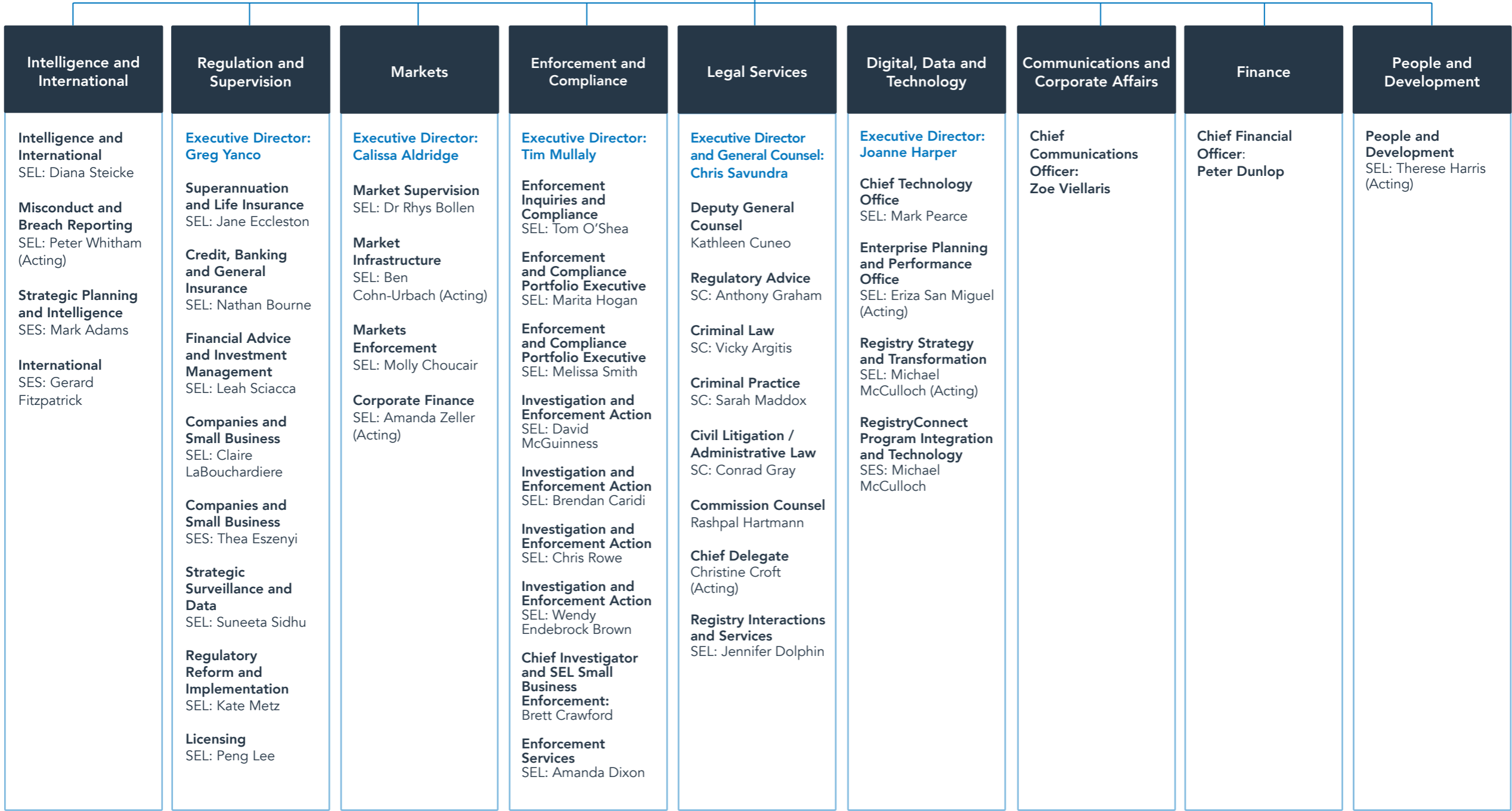
Chief Executive Officer
Warren Day

Senior Executive Adviser to CEO
SEL: Shelley Denniss

Registry Operations
SEL: Liesl McKay

Chief Internal Auditor
Lisa Berwick

Chief Risk Officer
Zack Gurdon



Key:
SEL: Senior Executive Leader | SES: Senior Executive Specialist | SC: Special Counsel