



ASIC

Australian Securities & Investments Commission

Datastream Communications Specification Site to Site VPN

Copyright Notice:

© Australian Securities and Investments Commission 2017

This work is copyright. Apart from any use permitted under the Copyright Act 1968, no part may be reproduced by any process, nor may any other exclusive right be exercised, without the permission of the Australian Securities and Investments Commission 2017.

Application	Datastream				
Classification	UN-CLASSIFIED				
Version	1.0.				
Location	Sharepoint				
Approval	Broker Enquiries				
Status	Effective date	Review date	Expiry date	Owner	Inquiries contact
Final	15 th May 2017	15 th May 2018	N/A	ASIC IT	Broker Enquiries

1. Contents

- 1. Contents2
- 2. Overview2
- 3. VPN Configuration Settings.....3
- 4. Connection Diagram.....5
- 5. References.....6

2. Overview

This document specifies the method for connection to the Australian Securities And Investments Commission Datastream application.

The legacy connection method for Datastream has been achieved using Frame Relay technologies. This method is no longer used for new Datastream connections. The replacement technology approved for Datastream communication with ASIC is a Site to Site Virtual Private Network (VPN). Existing Frame Relay connections are in the process of being migrated over to new VPN's replacing the connection.

The sections below define the requirements for both ASIC and the Datastream customer. This ensures the VPN endpoint meets the preferred security specifications which are mandated by the Australian Signals Directorate for Australian Commonwealth agencies. The VPN's established use Internet Protocol security (IPsec) to protect communications over IP networks. The protocols are well defined and considered to be standard best practice for securing communications.

All VPN's established will terminate at our primary datacenter. If a secondary VPN link is required it will terminate at our secondary datacenter.

It should be noted that any costs incurred by the customer for internet services, associated equipment, configuration and support are the sole responsibility of the connecting customer.

3. VPN Configuration Settings

The ASD specifies minimum requirements for protocol selection and key length etc (refer reference 5) which ASIC being a Commonwealth Agency must adhere to. Of course the preferred and/or minimum security settings are subject to change over time.

The tables below indicate the desired ASIC Site to Site VPN configuration settings. The cells shaded yellow indicates data needs to be added by the connecting agency and supplied to ASIC. Please contact ASIC if you are unsure about meeting the required settings or if you have questions around the protocol selections or settings.

Primary VPN Endpoint

IP SEC TUNNEL MODE VPN PARAMETERS FOR CONNECTING TO ASIC		
Agency	AUSTRALIAN SECURITIES AND INVESTMENTS COMMISSION	connecting agency
VPN Device type	Checkpoint Firewall R75.40	
VPN Tunnel Endpoint address	119.225.115.131	
Encryption Domain	144.55.14.55, 144.55.14.70	
IKE - Phase 1		
IKE Version	Supports version 1 & 2 [preference is 2]	
Pre Shared Key	Normally provided by ASIC	Normally provided by ASIC
Hash Algorithm	SHA256	SHA256
Encryption Algorithm	AES-256	AES-256
Key Exchange Algorithm	Diffe Hellman Group 19 (256 bit - Elliptical Curve Group) Preferred	
Security Association (SA) Lifetime	7200 seconds	7200 seconds
Negotiation Mode	Main Mode	Main Mode
Use of XAUTH	Disabled	Disabled
IKE - Phase 2		
Encapsulation Mode	Tunnel	Tunnel
Hash Algorithm	SHA256	SHA256
Encryption Algorithm	AES-256	AES-256
Perfect Forward Secrecy	Diffe Hellman Group 19 (256 bit - Elliptical Curve Group) Preferred	
Security Association (SA) Lifetime	3600 seconds	3600 seconds
Contact Info		
VPN Setup	ASIC IT Security - Gateway Operations (co-ordinator)	
Agency Contacts	broker.enquiries@asic.gov.au, gateway.operations@asic.gov.au	

Secondary VPN Endpoint (only if required)

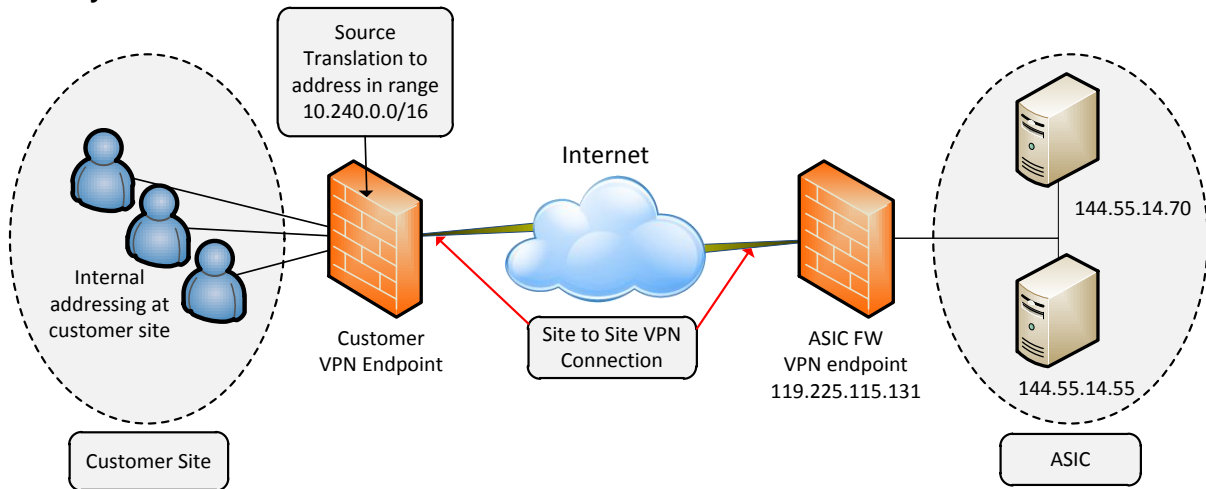
IP SEC TUNNEL MODE VPN PARAMETERS FOR CONNECTING TO ASIC		
Agency	AUSTRALIAN SECURITIES AND INVESTMENTS COMMISSION	connecting agency
VPN Device type	Checkpoint Firewall R75.40	
VPN Tunnel Endpoint address	203.192.66.157	
Encryption Domain	144.55.14.55, 144.55.14.70	
IKE - Phase 1		
IKE Version	Supports version 1 & 2 [preference is 2]	
Pre Shared Key	Normally provided by ASIC	Normally provided by ASIC
Hash Algorithm	SHA256	SHA256
Encryption Algorithm	AES-256	AES-256
Key Exchange Algorithm	Diffe Hellman Group 19 (256 bit - Elliptical Curve Group) Preferred	
Security Association (SA) Lifetime	7200 seconds	7200 seconds
Negotiation Mode	Main Mode	Main Mode
Use of XAUTH	Disabled	Disabled
IKE - Phase 2		
Encapsulation Mode	Tunnel	Tunnel
Hash Algorithm	SHA256	SHA256
Encryption Algorithm	AES-256	AES-256
Perfect Forward Secrecy	Diffe Hellman Group 19 (256 bit - Elliptical Curve Group) Preferred	
Security Association (SA) Lifetime	3600 seconds	3600 seconds
Contact Info		
VPN Setup	ASIC IT Security - Gateway Operations (co-ordinator)	
Agency Contacts	broker.enquiries@asic.gov.au, gateway.operations@asic.gov.au	

Further clarification on the configuration settings is available as required. Customers translating their source addresses to an ASIC assigned one will allow for existing routing and network configuration to function as intended.

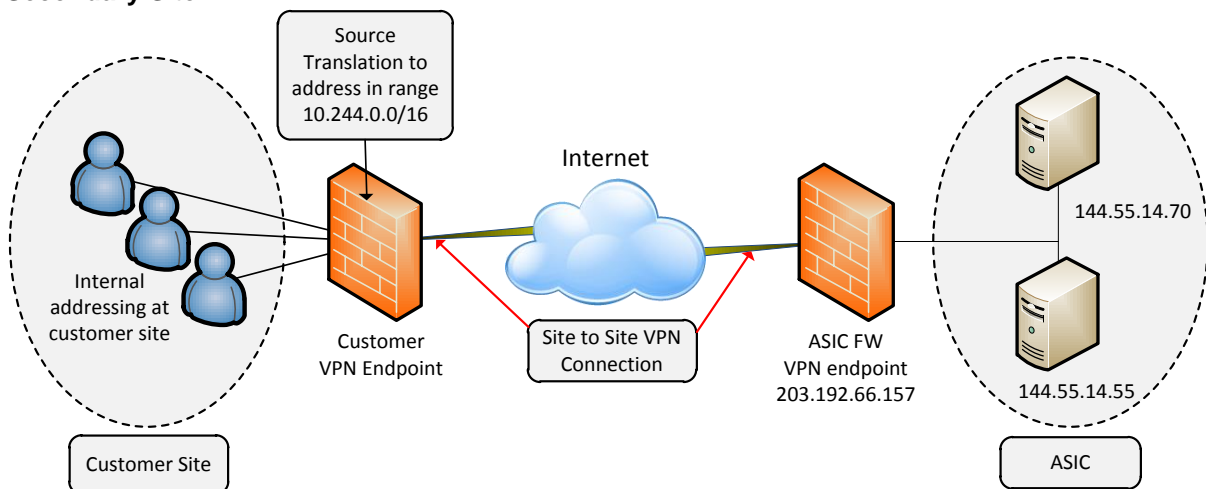
Pre shared keys are usually supplied by ASIC however depending upon configuration requirements the customer can supply the key.

4. Connection Diagram

Primary Site



Secondary Site



5. References

- 1 ASD Information Security Manual - <http://www.asd.gov.au/infosec/ism/>